



2022-23 ARIZONA WILDCATS MEN'S BASKETBALL

SEASON TICKETS

ALL A-F AREA SEASON TICKETS
ARE ASSIGNED TO WILDCAT
CLUB MEMBERS WHO
CONTRIBUTE TO
THE ICA CAPITAL
CAMPAIGN

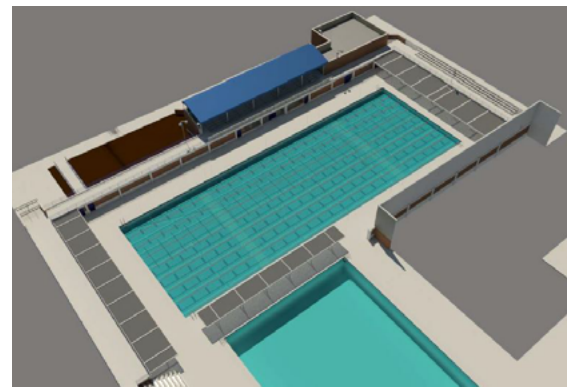


What is the Capital Campaign and why is it critical to the success of our student-athletes and our programs?

The Capital Campaign helps build new facilities as well as fund facility improvements and renovations.

In order to recruit elite level student-athletes and provide them with an outstanding college experience, on and off the playing surface, we must continually enhance our facilities.

Each project makes a significant difference in the lives of all of our nearly 500 student-athletes **and** can create amenities that Wildcat fans will appreciate.



ARIZONA BASKETBALL

How to secure season tickets...

- » There is nothing quite like the atmosphere and energy of a rockin' McKale Center when the Wildcats take the floor! A limited amount of season tickets are available throughout the arena. Now is the time to get season tickets!
- » A-F area season tickets will be assigned to those individuals who make a required contribution to the Capital Campaign.
- » The contribution can be payable over a five year period.
- » Once an individual has committed and completed a written commitment form, they will qualify for a specific seating area. Tickets will be assigned based upon availability.
- » Additional capital campaign contributions can be made to upgrade your current seating area; contributions are considered cumulative when enhancing your ticket location.
- » Seating reassignments begin after the May 1st renewal deadline and are based on the priority point system.
- » If the Capital Campaign amounts increase in the future, your commitment will be locked in at the time of signing.



KEY DATES

May 1st
Ticket Renewal

May 1st
Campaign Renewal

June & July
Parking Selection & Seat Upgrades/Selection



AREA	
A	Blue
B	Red
C	Yellow
D	Green
E	Purple
F	Grey
S Student	Orange
Scholarship Row	Teal

Floor Level Rows	1A-9
Loge Level Rows	10-16
Middle Level Rows	17-32
Upper Level Rows	33-43
Wheelchair	W

MEN'S BASKETBALL SEASON TICKET PRICES *These prices are representative of the 2022-23 season. Ticket prices are subject to change.

AREA	TYPE	TOTAL		Campaign over 5 yrs	Campaign Annual	Total Annual Cost First 5 yrs*
		TICKET PRICE	Two* Tickets			
A Floor/Loge	Campaign	\$2,310	\$4,620	\$75,000	\$15,000	\$19,620
B Floor/Loge	Campaign	\$1,510	\$3,020	\$50,000	\$10,000	\$13,020
C Middle	Campaign	\$1,170	\$2,340	\$25,000	\$5,000	\$7,340
D Loge/Middle	Campaign	\$870	\$1,740	\$10,000	\$2,000	\$3,740
E Middle	Campaign	\$735	\$1,470	\$5,000	\$1,000	\$2,470
F Upper	Campaign	\$535	\$1,070	\$2,500	\$500	\$1,570
N Upper	Non Campaign	\$425	\$850	-	-	\$850

Capital Campaign Contribution

- » A-F Area tickets may be assigned to those donors who make a contribution to the Capital Campaign.
- » Capital Campaign seating contributions begin with a suggested \$5,000 contribution (\$1,000 per Year for 5 years) to qualify for "F" tickets.
- » The suggested contribution amount for other areas (A, B, C, D & E) are shown above.

ARIZONA BASKETBALL

FAQ's

How do I upgrade my men's basketball seats?

- » You can request a seat upgrade each year during the renewal process. Upgrades are based upon availability and the Wildcat Club Priority Point System.
- » To upgrade to a new seating area, an additional Capital Campaign commitment may be required. Your capital campaign contribution is based on your cumulative total, therefore should there be a difference in the capital campaign commitment required for the upgraded seats, you would be required to contribute that balance.

» Can I get four tickets with one capital campaign commitment?

Yes, however the required amounts per seating area only qualify you for two tickets. Please refer to the pricing sheet for each pair of tickets.

Am I able to get three tickets?

It is possible to get three tickets with one capital campaign contribution, if a single ticket exists next to an open pair.

Is there a payment plan option?

Yes, we do offer payment plans for the Capital Campaign, A-F area season tickets and ticket payments.

Do I qualify for parking?

Yes, season ticket holders who contribute \$2,500 or more will receive complimentary parking based on their annual benefits level.

Will prices change from year to year?

Yes, ticket prices can change from year to year. However, once the capital campaign commitment has been signed, the individual will be locked into this amount.

Is my contribution tax deductible?

According to recent tax laws, payments that are made with the understanding that the right to purchase basketball tickets will be received are no longer tax deductible as charitable contributions.

Despite this change, Arizona Athletics remains grateful for your support! We cannot provide tax advice, so please consult your tax advisor for more information.



Wildcat Club | Arizona Athletics

McKale Memorial Center 1 National Championship Drive

P.O. Box 210096 | Tucson, AZ 85721-0096

Direct: **(520) 621-2582** | Fax: **(520) 621-2656** | **ArizonaWildcats.com**